

BUILT FOR IT.

120
LUMENS

CT2105

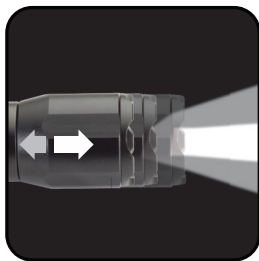
RECHARGEABLE FOCUSING POWER POCKET LIGHT

FEATURES

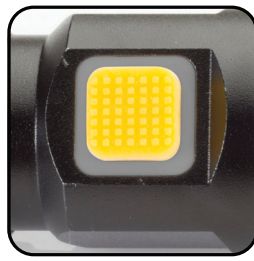
- CREE® LED technology
- Aircraft grade aluminum
- 3 Position switch (High, low, strobe)
- Focusing beam
- Battery charge level indicator
- Protected charge port

SPECIFICATIONS

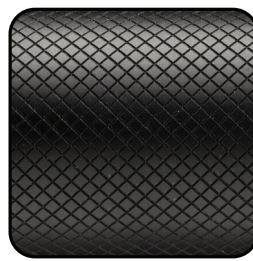
- 120 Lumen light output
- Up to 6.0 hr runtime
- Water & impact resistant
- 7.0" H x 1.25" W x 1.25" D
- 0.43 lbs



Focusing Beam
50 - 120m



3 Position Switch
(High, Low, Strobe)



Aircraft Grade Aluminum



Battery Charge Level Indicator



Protected Charging Port

Cat lights are built to get the job done—at work and beyond.

Built For It.™



© 2014 Caterpillar www.cat.com www.caterpillar.com

© 2014 Caterpillar. All Rights Reserved. CAT, CATERPILLAR, BUILT FOR IT, their respective logos, "Caterpillar Yellow," the "Power Edge" trade dress as well as corporate and product identity used herein, are trademarks of Caterpillar and may not be used without permission. E-Z RED Company, a licensee of Caterpillar Inc.

E-Z RED COMPANY, GLOBAL LICENSEE FOR
FLASHLIGHTS FOR CATERPILLAR INC.
8 LEONARD WAY, DEPOSIT, NY
INSIDE THE US 1-800-522-7947
INTERNATIONAL 1-607-467-2866

For more information call us at:
1-800-522-7947
1-607-467-2866

www.catlights.com