











Product datasheet

Product name	2-jaw puller For removing bearings, gears, discs, etc.
Product number	20-1
Product series	20
EAN	4021176009433

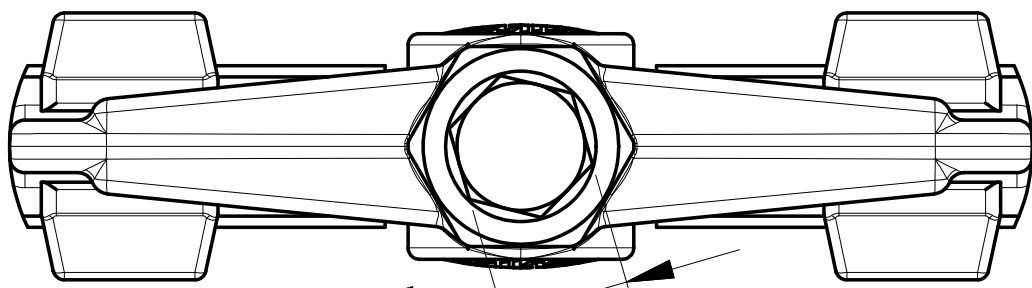
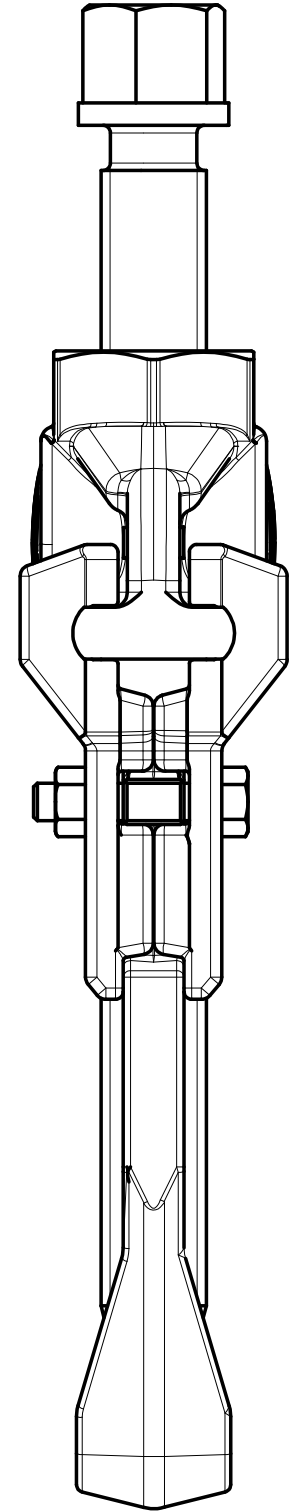
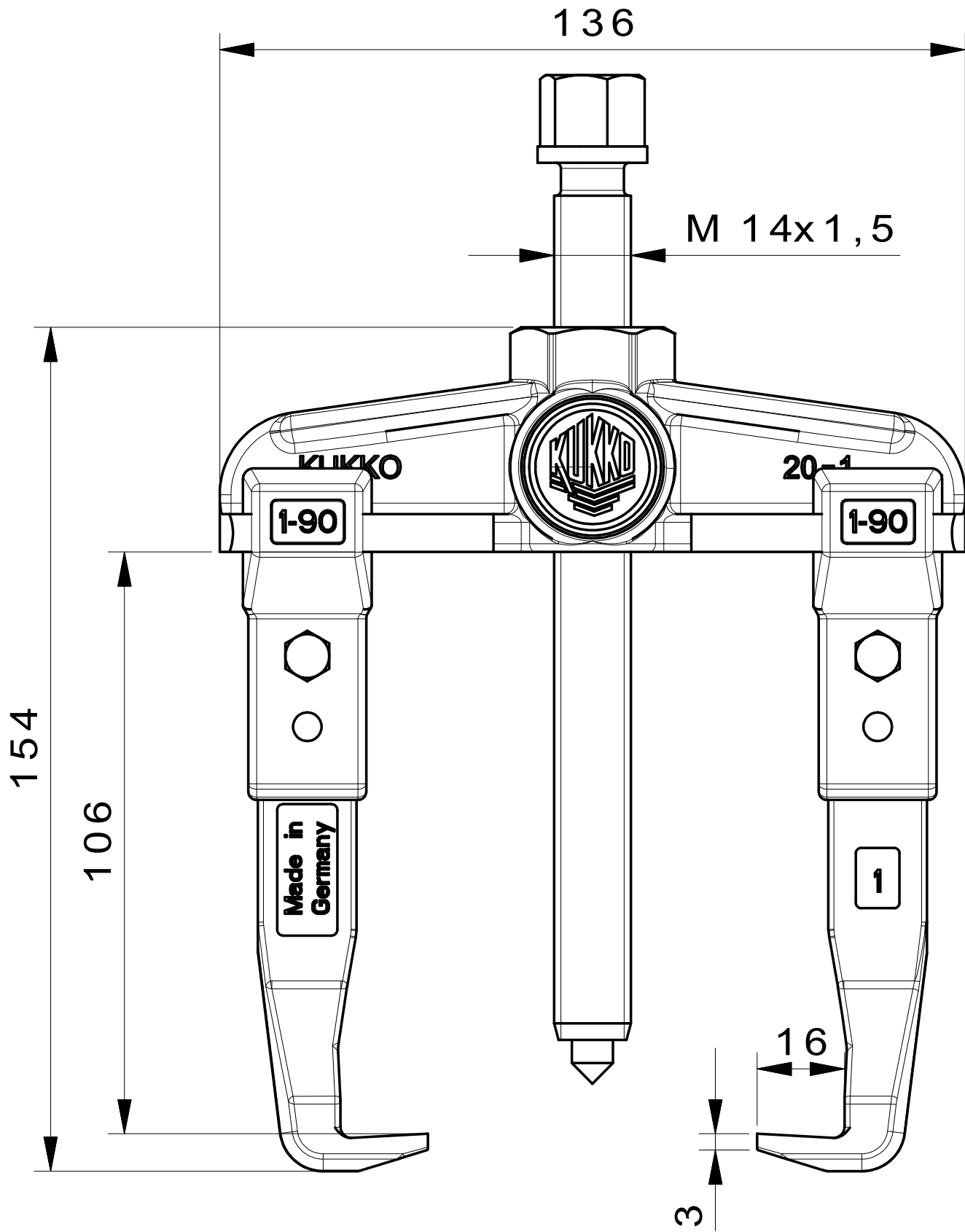
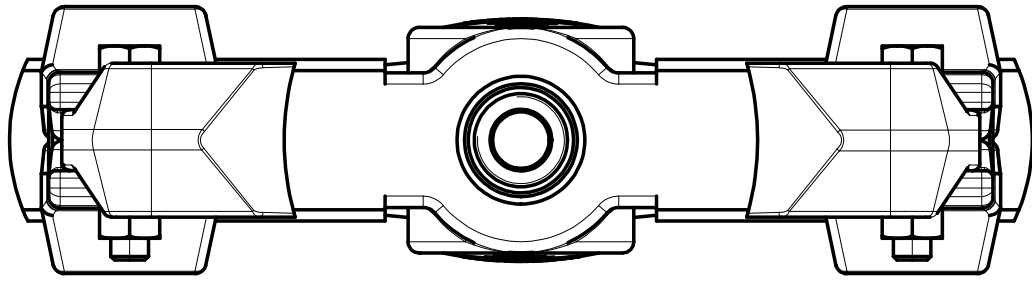


Technical attributes

Attribute name	Attribute value
 spread	90 mm (3 1/2 inch)
 depth	100 mm (3 7/8 inch)
 spread used internal	70 - 140 mm (2 3/4 - 5 1/2 inch)
 hexagon drive (male)	17 mm
max. maximum load	4.5 t (5 US t)
 max. maximum torque	80 Nm
 max. maximum torque	59 ft lb
 weight	1.3 kg
 ^x Number of jaws	2

Spare part

Product number	Product name
614160	Mechanical pressure spindle.
1-90-P	2 pulling jaws (pair)
20-1-T	2-jaw cross bar



SW 17

 <p>Kleinbongartz & Kaiser oHG Werkzeugfabrik Hilden - Germany</p>	Dokumentname: 20-1_2-Arm-Universal_Abzieher		Toleranz: DIN ISO 2768-m
	Dokumentbeschreibung: Baugruppe		Material: Hoch legierter Werkzeugstahl / High alloy tool steel
Erstellt / Geprüft von: Schultes	Erstellungsdatum: 30/03/2015		Maßstab: 1:1
Teilbeschreibung: 2-Arm-Universal_Abzieher /2-jaw puller			Wärmebehandlung / Härte: vergüteter Stahl/ tempered steel
Oberflächenbehandlung:			
Artikelnummer / ZNR.: 20-1	Dokumentversion: -	Schutzvermerk ISO 16016 beachten	